



# PEF Occupational Safety and Health Department

e-mail - [HealthAndSafety@pef.org](mailto:HealthAndSafety@pef.org)



## Headquarters:

800-342-4306 ext. 254  
518-785-1900, ext. 254  
Fax: 518-250-7839

## NYC Office:

100 William St, 17<sup>th</sup> Floor,  
New York, NY 10038  
800-522-8700 or 212-227-3132  
(**Michael Marquez** – Ext. 771)  
Fax 212-964-3571

## Syracuse Office:

4983 Brittonfield Parkway,  
Suite 204  
East Syracuse, NY 13057  
800-724-5004 or 315-471-2311  
(**Joshua Kemp** – Ext. 741)

- ⊕ Leisa Abraham, *Article 18 Co-Chair* [Leisa.Abraham@pef.org](mailto:Leisa.Abraham@pef.org) (315) 651-1213
- ⊕ Gabriela Franklyn, *Article 18 Co-Chair* [Gabriela.Franklyn@pef.org](mailto:Gabriela.Franklyn@pef.org), (845) 242-7162

**To contact Health and Safety staff, please use [HealthAndSafety@pef.org](mailto:HealthAndSafety@pef.org)**

- ⊕ Geraldine Stella, *Director, Health and Safety*
- ⊕ Joshua Kemp, *Assistant Director, Health and Safety*
- ⊕ Paige Saakyan, *Health and Safety Specialist*
- ⊕ Jazmine Nova Morales, *Health and Safety Specialist*
- ⊕ Michael Marquez, *Health and Safety Specialist*
- ⊕ Nicole Grabo, *H&S Assistant/ Conference Coordinator*
- ⊕ Kelly Lockwood, *Administrative Assistant*



## **Services offered by PEF H&S Staff:**

PEF H&S Staff have direct outreach to PEF members, H&S Committees, and NYS agencies on occupational safety and health issues.

- ⊕ Answer technical requests
- ⊕ Educate and train on H&S issues
- ⊕ Advise on compliance with applicable OSHA/PESH, Fire & Building Codes, local regulations, and contractual health and safety obligations
- ⊕ Assist members with worker's compensation issues and advise them of their statutory, contractual and NYS Civil Service Law rights and benefits
- ⊕ Facilitate joint H&S committees

## **Common safety and health issues for PEF members:**

- ⊕ Workplace Violence
- ⊕ Indoor Air Quality
- ⊕ Mold
- ⊕ Occupational Stress
- ⊕ Repetitive Strain Injuries
- ⊕ Asbestos
- ⊕ Fire and Life Safety
- ⊕ Infestation
- ⊕ Trip hazards
- ⊕ Overcrowding
- ⊕ Understaffing
- ⊕ Water Quality
- ⊕ Back Injuries
- ⊕ Infectious Diseases, HIV/HBV, TB

## What Safety Representative Needs to Know:

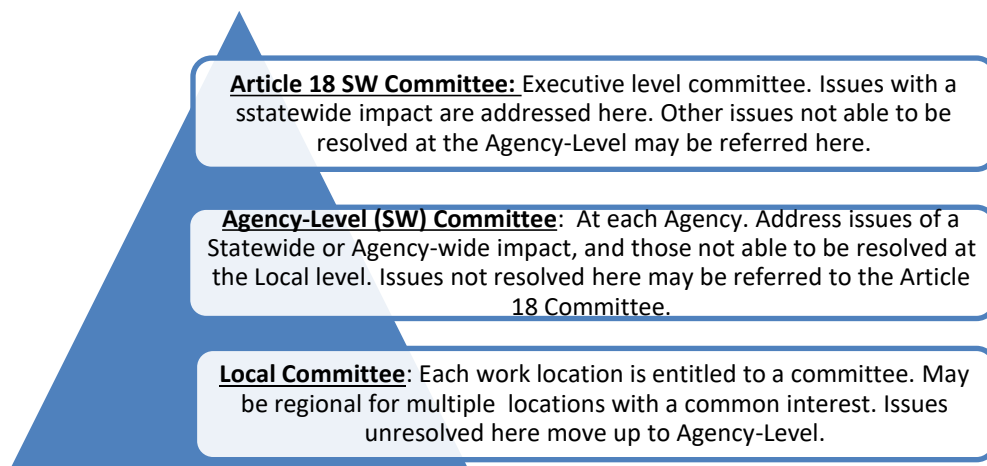
- ⊕ Resources
- ⊕ Hazard Identification
- ⊕ Hazard Resolution
- ⊕ Rules, regulations, and standards
- ⊕ Strategies and action steps
- ⊕ Training
- ⊕ Communication
- ⊕ Labor/Management Committee Systems

## Resources & Tools:

- ⊕ PEF/NYS Contract
- ⊕ PEF H&S Department
- ⊕ SHIP [Safety and Health Initiative Program] Grants through Article 18
- ⊕ PESH Compliance/PESH Complaint, PESH Consultation
- ⊕ Allies/Coalitions/Resource Groups
- ⊕ H&S Workshops
- ⊕ HAB OSH Training and Education Grant
- ⊕ PEF Training Programs
- ⊕ H&S Fact Sheets, Booklets, CDs

## Health & Safety Committees:

Provided for in PEF/NYS Contract Article 18. Made up of Union and Management Representatives who meet at least quarterly to address workplace health and safety issues, and proactively implement health and safety programs.



## Web Resources:

- ⊕ H&S on the PEF Webpage: <https://www.pef.org/departments/health-safety/>
- ⊕ NYS DOL PESH Webpage: [http://www.labor.ny.gov/workerprotection/safetyhealth/DOSH\\_INDEX.shtm](http://www.labor.ny.gov/workerprotection/safetyhealth/DOSH_INDEX.shtm)
- ⊕ NYS DOH Occupational Health Clinic Network Webpage: [http://www.health.ny.gov/environmental/workplace/clinic\\_network.htm](http://www.health.ny.gov/environmental/workplace/clinic_network.htm)
- ⊕ Councils for Occupational Safety and Health (COSH) list: [www.coshnetwork.org/COSHGroupsList](http://www.coshnetwork.org/COSHGroupsList)
- ⊕ OSHA <https://www.osha.gov/>

## Trainings

The PEF Health & Safety Department offers a wide variety of training opportunities for PEF members and Leaders. Training may include management, other bargaining units, various state agencies and/or any entities that will promote cooperation and understanding of H&S concerns in your workplace.

Workshops are conducted at members' worksites, PEF Regional Conferences, Agencies' Conferences, and online. Each training is tailored to meet the specific needs of the group requesting them. If you are interested in one of our trainings, please contact us at [HealthandSafety@pef.org](mailto:HealthandSafety@pef.org) or 1-800-342-4306 ext. 254 and a Health & Safety Specialist will assist you.

### Active Intruder/Active Shooter

- Active Violence Immediate Response (AVIRT)
- Bringing Active Shooter Training to your Workplace

### Building Related H&S issues

- Asbestos
- Bed Bugs
- Conducting Walkthroughs
- Indoor Air Quality and Mold
- Parking Lot Safety
- Resolving Workplace Health and Safety Concerns
- Slips Trips and Falls

### Emergency Response

### Ergonomics

- Direct Ergonomics
- Driving Ergonomics
- Ergonomic Assessor
- Work from Home Ergonomics

### General Health and Safety Committee Training

- Health and Safety- Breaking Down Barriers
- Health and Safety Committees 101

### Hazard Mapping

### How to Analyze Injury and Illness Records

### Influenza and Emerging Infectious Diseases

### Organizing Around Health and Safety

### OSHA General Industry

- OSHA 10
- OSHA 30

### Pandemic Planning

### PESH

- PESH 101
- PESH our Partners in Safety

### Safe Patient Handling- Overview

### Workers' Compensation

- Worker's Compensation and a Safe Return to Work
- Worker's Compensation and COVID-19
- Worker's Compensation Advanced (2-day)

### Workplace Violence

- Co-Worker Conflict Resolution
- Test the Strength of your Workplace Violence Program
- Workplace Bullying: Prevention and Response
- Workplace Violence Overview
- Workplace Violence Risk Assessment